



LAKELAND
COMMUNITY
THEATRE

THE EUNICE FULLER
THEATRE
FOR YOUTH

RATED



LEGALLY BLONDE

The Musical™



Music and Lyrics by
LAURENCE O'KEEFE and **NELL BENJAMIN**

Book by **HEATHER HACH**

Based on the novel by Amanda Brown and the
Metro-Goldwyn-Mayer motion picture

Director
Jordyn Jones

Musical Director
Alannah Moyer

Choreographer
Preston Pujol

Legally Blonde The Musical JR. is presented through special arrangement with Music Theatre International (MTI). All authorized performance materials are also supplied by MTI. 423 West 55th Street, New York, NY 10019 (#p) 212-541-4684 | (#f) 212-397-4684 | www.MTIShows.com



July 10-26, 2026

PLAYGUIDE

LIVE RICHILY

CORE WEALTH
ADVISORS

COREWEALTH.COM • 863.904.4745
124 South Florida Avenue 4th Floor
Lakeland, Florida 33801



Supporters of Lakeland Community Theatre for 33 years

Affordable, Accessible, Experienced

Ira A. Serebrin *Attorney At Law*

*Serving Polk County
For Over 48 Years*

Providing professional legal service you can count on.

Marital & Family Law • Criminal Law • Personal Injury

www.Contactiratoday.com

863-666-1939



TAKE A BOW

FOR ALL YOU DO TO BRING CULTURE
AND CREATIVITY TO THE MAIN STAGE

We're honored to be cast in a supporting role.



HEATH

Funeral Chapel & Crematory

— Since 1959 —



BECOME A FOSTER PARENT

SHARE THEIR JOURNEY



There is an **urgent need for foster families** to provide safe and loving homes to teens, sibling groups and children with special needs. **Do you have room in your heart and home?**



 **863-519-8900 x 289**


Heartland
for Children

    
www.heartlandforchildren.org

Lakeland Community Theatre 40th Anniversary Season 2025–2026

Board of Directors

President Greg Snyder

Vice President Cathi Champino

Treasurer Tom Poulton

Secretary Melinda Dixon

Board Members Christiaan Abbott

Brian Bailey, Cindy Hardin Pilka

Elina Katzaras, Joelle Johnson

Robert Macey, Maureen McGowan

Alex Shanks, Crystal Springs

Terica Williams

Past President Jon Brock

Theatre Staff

Artistic Managing Director Alan S. Reynolds

Business Manager Bernardette Heaps

Technical Director Orlando Mora

Education Director Jordyn Jones

Office/Production Assistant Autumn Myers

Development Director Becky Murphy





Please be sure to silence and stow all electronic devices before the performance starts. Taking photographs and/or use of other recording equipment during the performance is not allowed.



Lakeland Community Theatre is an ADA certified venue. Wheelchair accessible seating is available. Ask an usher to assist you.

We can't do this without you!

Ticket sales cover less than half of our annual costs, so community support is essential to what we do.

Thanks to the generosity of our donors, sponsors, and partners, we're able to continue providing high-quality, affordable theatre for everyone in our community.

We are grateful for your support.

In Kind Sponsors

City of Lakeland
Ruthven Holdings LLC
Hall Communications

Executive Producer \$10,000 & up

Core Wealth Advisors
The Givewell Foundation
Publix Supermarket Charities
The Strategic Alliance • Visit Central Florida
State of Florida Division of Arts & Culture

Producer \$5,000 & up

The Paxson Morrison Foundation
Rob & Tammy Springer

Co-Producer \$2,500 & up

Cassandra Banning

Claremont Family Fund

Sandra, Stanley & Spencer Croy

Deborah Holland

The Lakeland Community Theatre -

Thelma Kells Endowment Fund

The Twin Palms Ladies Guild

Associate Producer \$1,000 & up

The Eunice Fuller Foundation

Lyndsay Health

Karen Holcomb • Sheryl & Allen Hockenbery

Todd & Holly Parrish

Parrydise Pools • Pediatric Dentistry

The Shanks/Collier Family

Twin Palms Ladies Guild

Vision First • Watson Clinic

Stage Manager \$500 & up

Carolyn & Jeff Anderson • Anonymous

David & Polly Caldwell • Ken & Nyla Campbell

The De Sena Family • Judy Fowler

Karen Holcomb *in memory of Vada Jewell*

Karen Holcomb *in memory of Janet Sawyer*

Bob & Jane Macey • Tammy & Ira Serebrin

The Ed Smith Family • M.E. Tye

Assistant Stage Manager \$250 & up

David & Christine Aldwardt

Jordan & Nicole Chancey

Peggy & Richard Dudrak • Dr. Lynn Grady

Jordyn Helms • Steven Jones • Tom & Doris Lyons

Jay & Debbie Reardon • Debbie Rozen

Rob & Peggy Semans

Spotlight \$100 & up

Christiaan & Brandy Abbott • Kay & Jud Allen

Mickie & Gary Brown • Constance Canfield •

Kathleen & Jeff Coffman • Maggie & Gil Diaz

Charlene Dow • Tom & Mariane Evans

Debra Hayman • Jason Kingham

Steven Lacks • Richard & Marcia Lindblom

Donna & Anthony Massaro

John & Lavinia Muldoon • The Murphy Family

Lydia Pennington *in honor of Garth Pennington*

Tom Poulton • Jessica Prescott

Debbie Ritter • Cindy Russano

John & Lynne Scott

Ned & Vina Shah • Spoto Family

Beverly Springer • Cristin Strawbridge

Renee Tatum • Doris & Bob Trohn

Stagehand \$25 & up

Kristin Aiken • The Alvarez Family

Stephanie Bodolay • Don Brushaber

Joseph Buckler • Nita Buckler

Diane Burda • Betty Calhoun • Robert Campbell

Denise Cowan • Valerie Cullen

Bruce & Jean DiBello

Sheila Geheren • Carol Hall • Linda Hansen

Justin Heacock • Carol Holzschuh

Victor & Issa Jones • Philip Kelley

Bonnie Krasnuik • Sandra Limback

Alexander Mallett • Elizabeth Manning

Chelsea McDonald • Ken & Carol Murray

Dwight & Carol Nash • Christina Nelson

Jeffrey Obrzut • Joshua Peek

Elizabeth Prior • Brian & Melissa Rhodes

Barbara Rocker • Perry Samples

Sarah Schiemann • Laura Shipton Amanda

“Mandy” Rogers • Chuck & Ann Snavely

Lou Tindall • Ashley Vaughan • Diane Votaw

Kathy Vousden • Beverly Waters

Makayla Weick • Mary Wendel

\$40 for 40 Club

The Alvarez Family • The Casasnovas Martinó Family

The Dixon Family • The Elliott Family • Debbie Hayman

The Heaps Family • The Steven Jones Family

Anita Kollinger • Tom Mook • The Murphy Family

The O’Leary Family • The Pappas Family

Todd & Holly Parrish • John David Partain

The Pennington Family • Jennah Rohde • Sophie Rohde

Rob & Peggy Semans • Ken & Jackie Shadrake

Chuck & DeeDee Smith • The Snyder Family

Sahithi Talluru • Kathy Vousden

CAST

Elle Woods	Isabella Smith
Emmett Forrest	Lane Blackmon
Warner Huntington III	Max Pappas
Paulette	Paige Craig
Vivienne Kensington	Hannah Pierce
Serena	Phoebe DiBona-Liberatore
Pilar	Kamryn Moxam
Margot	Annabelle Rivera
Professor Callahan	Evan Mieles*
Brooke Wyndham	Silvana Echenique*
Enid Hoopes	Bella Accornero
Kate	Julia Avarez
Sundee/Kyle/Ensemble	Mario Muñoz*
Aaron Schultz/Ensemble	Desmond Scarpelli
Grand Master	
Chad/Dewey/Ensemble	Cesar Rivas
Whitney/Ensemble	Cecilia Walls*
Pforzheimer/Ensemble	Braydon Horvatin
Lowell/Ensemble	Griffin Hupka*
Winthrop/Ensemble	Daniel Kittner
Chutney/Ensemble	Jillian Glisson
Ensemble	Lillian Akins-Demers*, Sarah Blakeney, Gabby Champino, Ethan Chapman, Deanna Cohen, Aoife Cullen, Kira Hance, Annabella Harvard*, Katerina Katzaras, Zoé Katzaras, Abigail Leyte-Vidal*, Zara Melanson*, Mathias Muñoz*, Amelia Rivera*, Jennah Rohde, Rafael Roman*, Lily Kate Shanks, Jordyn Villareal, Belle Woodsby
Bruiser	Pickles Pappas
Rufus	Twyla Pujol

Production Staff

Director	Jordyn Jones
Assistant Director.....	Padraig Cullen
Music Director	Alannah Moyer
Choreographer	Preston Pujol
Stage Manager	Laura Beard
Assistant Stage Manager	Amie Pappas
Technical Director	Orlando Mora
Lighting Design	Orlando Mora
Props Mistress	Kelsey Reynolds
Sound Operators	Kira Morisako,
Crew Chief	Angela Shanks
Run Crew	Cathi Champino, Caedmon Palau, Tru Palau, Sahithi Talluru, Karis Helms
Flies	PJ Champino, Max Champino, Caedmon Palau
Spotlights	Reagan Myers, Maggie Jeffery, Elliott Rogers
Dressers	Edna Cohen, Carmen Moro
“Emotional Support Bruiser” to Miss Jordyn	Elise Dixon

*Thanks to the City of Lakeland,
Theatre Winter Haven, our wonderful volunteers
and everybody else that helped
make this production possible.*



LEGALLY BLONDE

The Musical™ 

Music and Lyrics by

LAURENCE O'KEEFE and NELL BENJAMIN

Book by

HEATHER HACH

Based on the novel by Amanda Brown

and the Metro-Goldwyn-Mayer motion picture

Original Production by Hal Luftig, Fox Theatricals, Dori Berinstein, James L. Nederlander, Independent Presenters Network, Roy Furman, Amanda Lipitz, Broadway Asia, Barbara Whitman, FWPM Group, Hendel/Wiesenfeld, Goldberg/Binder, Stern/Meyer, Lane/Comley, Bartner-Jenkins/Nocciolino and Warren Trepp; Produced in association with MGM Onstage, Darcie Denkert and Dean Stolber.

Legally Blonde The Musical JR.

Is presented through special arrangement with
Music Theatre International (MTI).


All authorized performance materials are also supplied by MTI.

423 West 55th Street, New York, NY 10019

(#p) 212-541-4684

(#f) 212-397-4684

www.MTIShows.com



ABIGAIL LEYTE-VIDAL

Way to go, Abigail!
We can't wait to see
you shine on the
LCT stage.

Love, Mom, Dad,
Brandon, Catherine, and Ethan



ANNABELLA HARVARD

We are so proud of you
and everything you have
accomplished!!

We love you so much!

Break a Leg!

Love Mom, Garrett, Mimi
and the family

AOIFE CULLEN

We love you Aoife and are
so proud of you stepping
back on stage at LCT!
Shine bright like the star
you are
Love ~ The Cullen Clann



BELLA ACCORNERO

We are so proud of you
and all of your
accomplishments.
Always remember that
"Being true to yourself
never goes out of style"
We Love You!





BELLE

WOODSBY

**We love you!
Congratulations
and break a leg!**



CESAR RIVAS



**We are so proud of you!
Papi may all your dreams
come true because
everything you do you do
with the heart.
We love you to infinity and
beyond!
Con amor Papá, Mamá
Cecilia y Celeste**

DESMOND SCARPELLI

Break a leg!

We are so proud
of you!

Love, Your Fam



HANNAH PIERCE



You are an amazing
human- we couldn't
be more proud.
And you - you have
the best freaking
shoes
Love - Mom & Dad



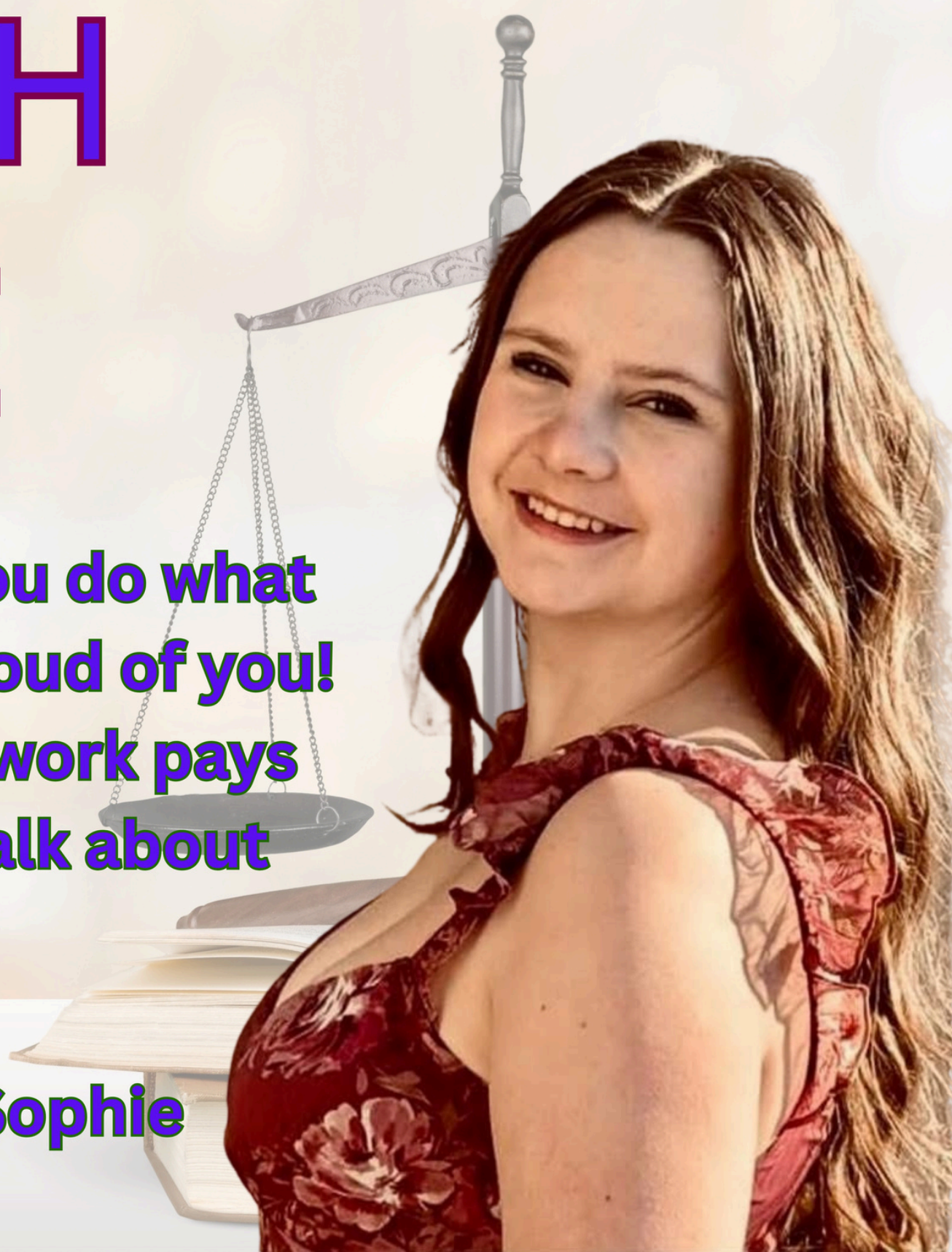
ISABELLA SMITH

**“What, like it’s hard?” –
Not for you, superstar!
Go break a leg and show the
world that brains, beauty,
and kindness are the
ultimate power combo!
We love you, Dad, Mom,
Brownie, Casanova
and S'mores**

JENNAH ROHDE

**We love watching you do what
you love & are so proud of you!
And if all your hard work pays
off, maybe we can talk about
a nice Birkin bag!**

Love, Mom, Dad, & Sophie





JILLIAN GLISSON

We are so proud of
all you do!
Keep reaching for
the stars! Shine bright
Love,
Momma, Rocky and Jacob

JULIA ALVAREZ

LOSE THE GUM KATE!
Your smile lights up the
stage. Keep smiling
and shining bright!
Break a leg!
Love, Mom, Dad,
and Johnathan





KAMRYN

MOXAM

**We are so excited to
watch you take the stage
and do what you love!!**

Break a Leg!

Love,

**Mom, Dad, Bailey,
Brady and Peyton**

KATERINA & ZOÉ KATZARAS



**“Oh my God, you guys!”
From the first spotlight to
the final bow, you make
us proud.**

**Keep believing in yourselves
and reaching for the
impossible
—you were made to shine!**

**We love you,
Daddy, mommy, and Athená**





KIRA HANCE

From the Delta Nu house to Harvard Law—anything is possible. Never stop chasing your dreams! Always so proud of you! Love, Mom, Dad & Colton



LANE BLACKMON

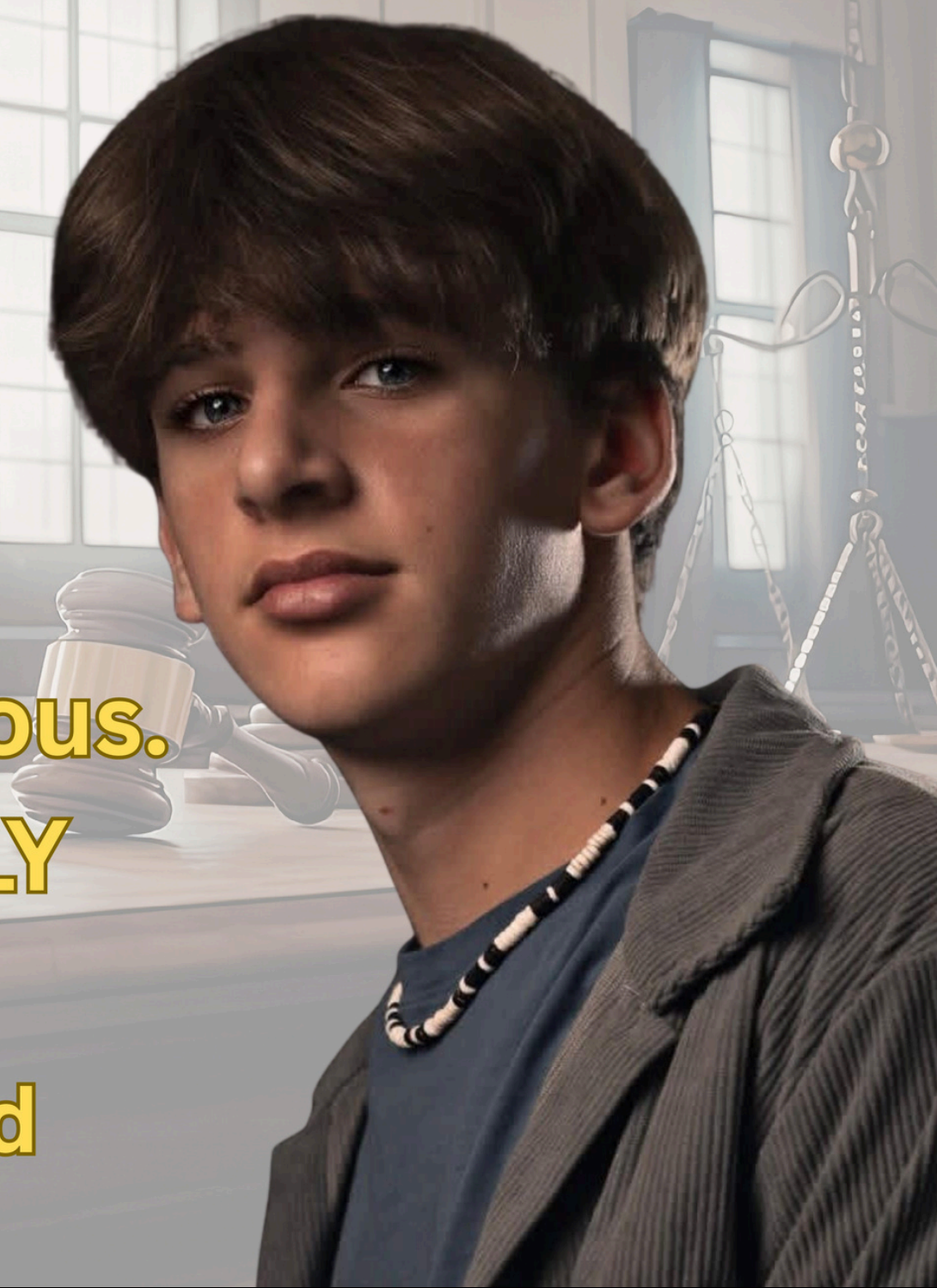
If Legally Blonde teaches us anything, it's that hard work pays off—and you've been proving that long before opening night. We can't wait to see how far your talent and dedication will take you. Break A Leg! We love you! -Mom, Dad, Lyla, Liv and Lincoln

MAX PAPPAS

It's time to get serious.

**We are SERIOUSLY
proud of you!**

Love, Mom and Dad



PHOEBE

DIBONA-LIBERATORE

**Our Serena
superstar! So proud
today and always.**

**Can't wait to see
what you do next!**

We love you!



Production Staff



Jordyn Jones
Director



Alannah Moyer
Music Director



Preston Pujol
Choreographer



Laura Beard
Stage Manager



Kelsey Reynolds
Props Mistress



Orlando Mora
Lighting Design



Padraig Cullen
Assistant Director



Nicholas D. Judy
Scenic Design

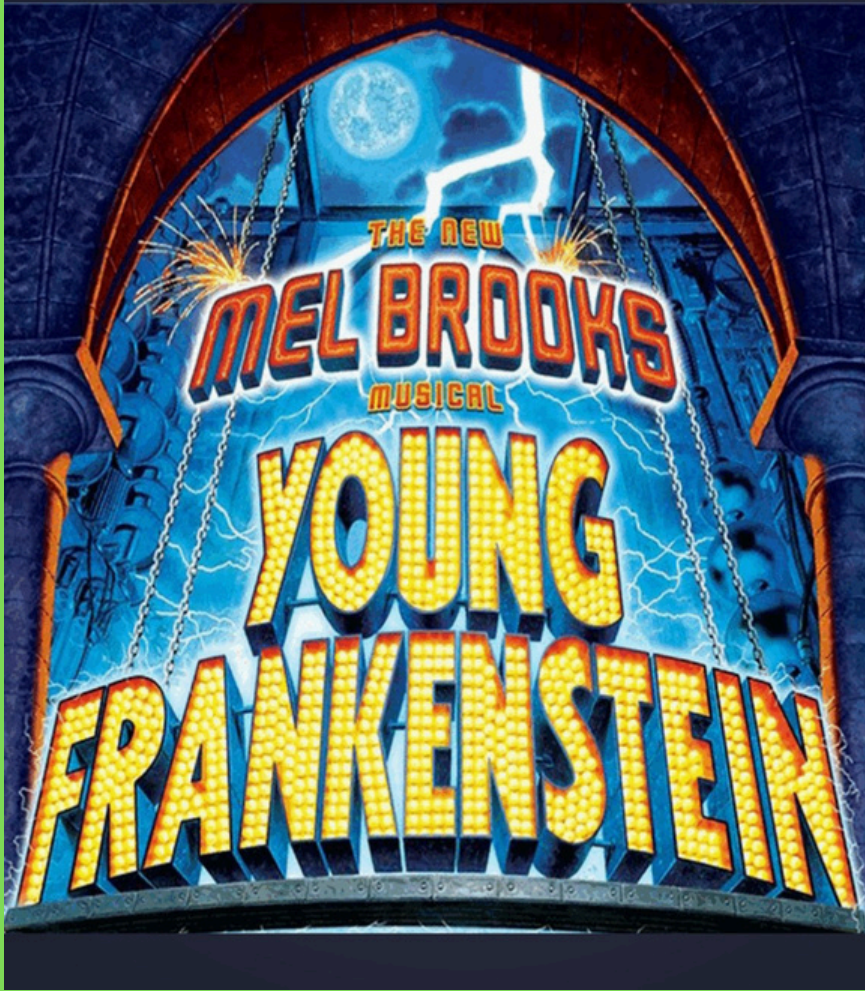


Alex Reynolds
Scenic Artist

Playing at Local Community Theatres



MainStage
Jul 9th - Aug 2nd, 2026



Jun 12- 21, 2026



Jul 17- Aug 2, 2026



Aug 14- Sep 6, 2026

Dr. Erin

Makes Me

Smile

**Pediatric
Dentistry
of Lakeland**



Schedule an appointment today

(863)640-2150

MYDRERIN.COM • 5710 HWY 98 N, LAKELAND, FLORIDA 33809



OPTUM
Vitality

- BIOTE Pellets**
- Hormone Optimization**
- O-Shot / Clitoxin**
- P-Shot / Bocox**
- Body Contouring**
- Weight Management**
- Cellulite Reduction**

Dr. Maria I Martino
863-268-4826
213 Ave. D SW
Winter Haven



AN EVOLVING Legacy

Supporting the Lakeland Community Theatre and celebrating their hard work in providing creative opportunities for children and others in our community.

Since 1988, Clark, Campbell, Lancaster, Workman & Airth, P.A. has been committed to protecting business and family assets through the work of dedicated, caring attorneys. Experience the difference that Lakeland's most trusted legal team can make.

Timothy F. Campbell

tcampbell@clarkcampbell-law.com

- BOARD CERTIFIED IN REAL ESTATE LAW
- BOARD CERTIFIED IN CITY, COUNTY AND LOCAL GOVERNMENT LAW
- LAND USE AND ZONING
- COMMERCIAL REAL ESTATE
- CORPORATE LAW



**CLARK, CAMPBELL, LANCASTER,
WORKMAN & AIRTH, P.A.**

— ATTORNEYS AT LAW —

500 S. Florida Ave. #800; Lakeland, FL 33801
863-647-5337

clarkcampbell-law.com

REAL ESTATE CORPORATE LAW LAND USE ESTATE PLANNING
TAX LAW COMMERCIAL LITIGATION ELDER LAW MEDICAID PLANNING

VISION FIRST



**PUT YOUR VISION CENTER STAGE
UPGRADE YOUR EYE CARE**

Theatre Dad of Elise,
Dr. Dixon is proud to partner with
Lakeland Community Theatre.

863-576-9977
WWW.VISIONFIRSTFL.COM

THE Ruthvens

Central Florida's Warehouse Specialists

Provider of the LCT Workshop space

41 Lake Morton Drive, Lakeland, FL 33801
863-686-3173 www.ruthvens.com



WE'RE ON TOP OF WHAT MATTERS MOST

863-324-4043

www.1stClassRoofingIncFL.com



Ever Argued With A Woman?

Advocate Law Firm, P.A.

**Divorce/Family • Criminal Defense
Personal Injury**

863-644-5566

EverArguedWithAWoman.com

FINE ART at the **MAGNOLIA**

Featuring 19 fine artists & craftsmen

August 22 & 23, 2026

Magnolia Building


702 E. Orange Street

Sat (10 - 5)

Sun (10 - 4)

**Open to
the public!**

follow us

 @FineArtMagnolia



Endorsed by:



Artist,
Tom Wrenn



TRINITY

Presbyterian Church



SUNDAY WORSHIP

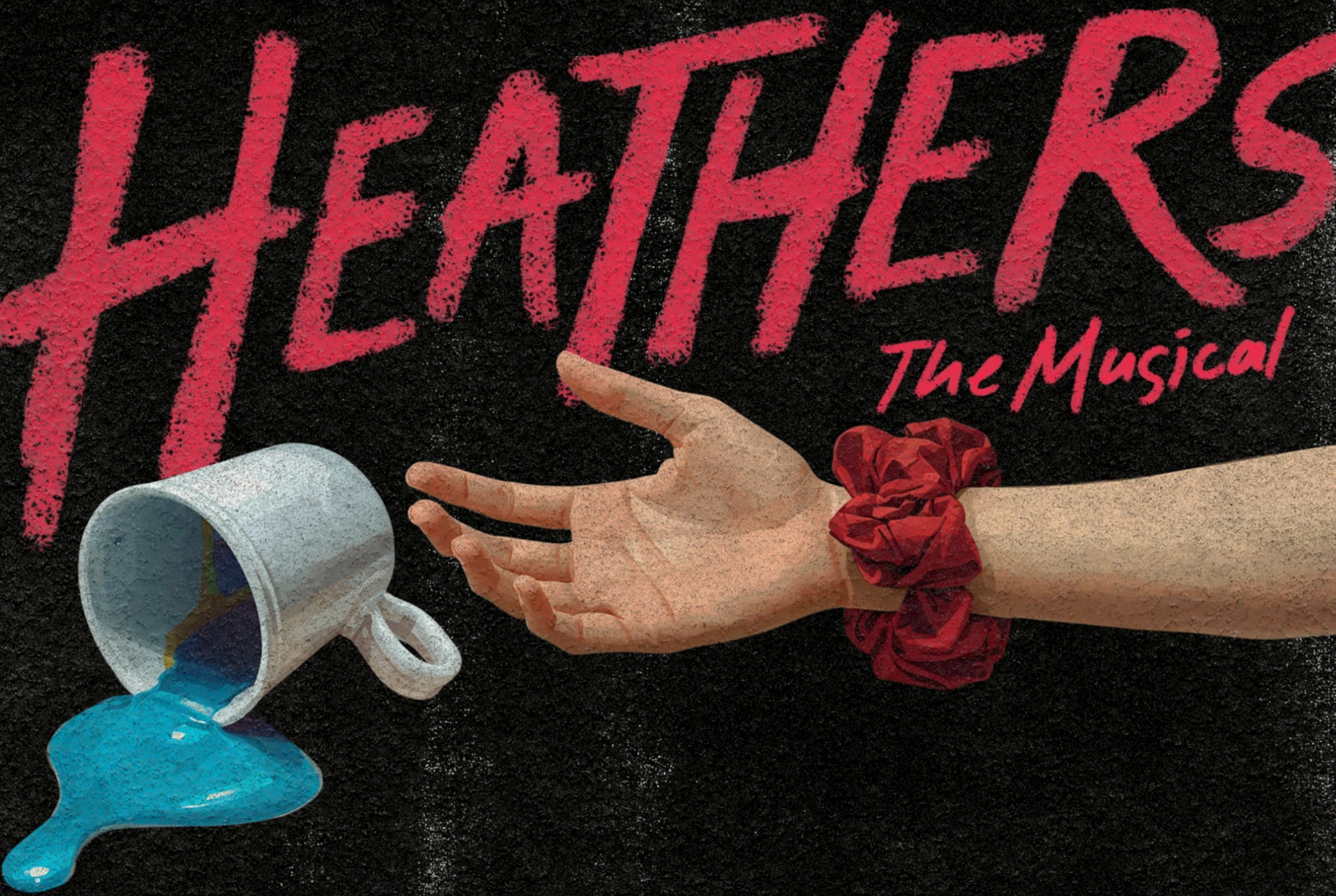
9:00 & 10:45am

301 N Florida Ave | 33801

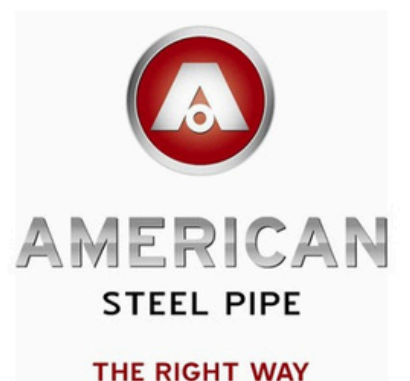
863-603-7777

trinitylakeland.org





**PROUDLY SPONSORED BY
THE STRATEGIC ALLIANCE**





Lyndsay Health

DIRECT PRIMARY CARE

Nikki McWaters ARNP



DIRECT PRIMARY CARE

- Unlimited Visits
- No Copays
- No Deductibles

Memberships
Starting At

\$79

per month

Changing The Way You Experience Healthcare

MEMBERSHIP INCLUDES

Primary & Chronic
Disease Care



Illness or Injury Visits



Telehealth



Free Generic Medication



Negotiated Low Cost
Labs & Radiology



Contact Us Today!

LyndsayHealth.com

863.220.7229



Lyndsay Health



BREAK A LEG FROM ATLAS PROJECT CONSULTANTS!



Contact Us

info@goatlas.us

www.goatlas.us

- Beverage and food manufacturing
- Project Management/Engineering
- An extension of your project team

Proud members of **Catapult**  **LAKELAND CHAMBER of COMMERCE** 



LAKELAND
Real Estate Group, Inc.



**A Real Estate Firm
Representing Your Side!**

863.712.4207

lakelandfloridaliving.com

Petra Norris

Broker, Owner, Realtor[®]

P.O.Box 92050
Lakeland Florida 33804
+1 (863) 619-6918

+1 (863) 712-4207
petra@petranorris.com

WATSON CLINIC

Setting the *Scene* for a Lifetime of Good Health.

At Watson Clinic, your health will always take center stage. With great compassion and expertise, our team of over 350 physicians and providers work to keep you healthy and vital, so you can savor every moment in the spotlight. Watson Clinic is proud to have played a role in our community's healthcare for over 80 years.

When you're committed to your patients, it shows.



Central Florida's Premier Healthcare Provider

863-680-7190 | WatsonClinic.com |       

you
**LOCAL
RADIO**



Playin' It All!

max

107.1 • 95.9





**Parrydise Pools
takes the worry
out of pool care!
Our ultimate goal is
to ensure your
swimming pool is
safe, sparkling and
ready for your
enjoyment!**



**2875 Mine and Mill Rd
Ste 101,
Lakeland, FL 33801
(863) 397-9085**

www.parrydisepools.com



EMPOWERING OUR PERFORMERS.

We're proud to support those
who dream of a brighter tomorrow
through the performing arts.



NOURISHING COMMUNITIES



LAKELAND
PAINTING COMPANY

*Serving Polk County
Over 15 Years Experience
Locally Owned & Operated*

**Interior • Exterior
Residential • Commercial**

JoshCranor@gmail.com

863-670-1601



Make the rest of your life
the best of your life.



LAKE GIBSON VILLAGE OFFERS
THE FINEST IN ASSISTED LIVING
AND MEMORY CARE.



LAKE GIBSON
VILLAGE

SENIOR LIVING COMMUNITY

Call us today

863.815.6195

LakeGibsonVillage.com

ASSISTED LIVING FACILITY LICENSE 13081

771 Carpenters Way | Lakeland, FL 33809

